

BLANKET

A REVERSIBLE BABY BLANKET



LEARNING TO SEW PROJECT 5

TERMS OF USE: you may use this pattern to make items to sell in quantities less than 100 per year. This pattern is not to be shared, sold, duplicated or transferred to another in any way. If you are purchasing this pattern to teach a class, each student MUST buy their own copy.

DESCRIPTION-Blanket is a reversible baby blanket.
The finished size is approximately 35" x 35

RECOMMENDED FABRICS: WOVENS

Baby Flannel

TERMS OF USE

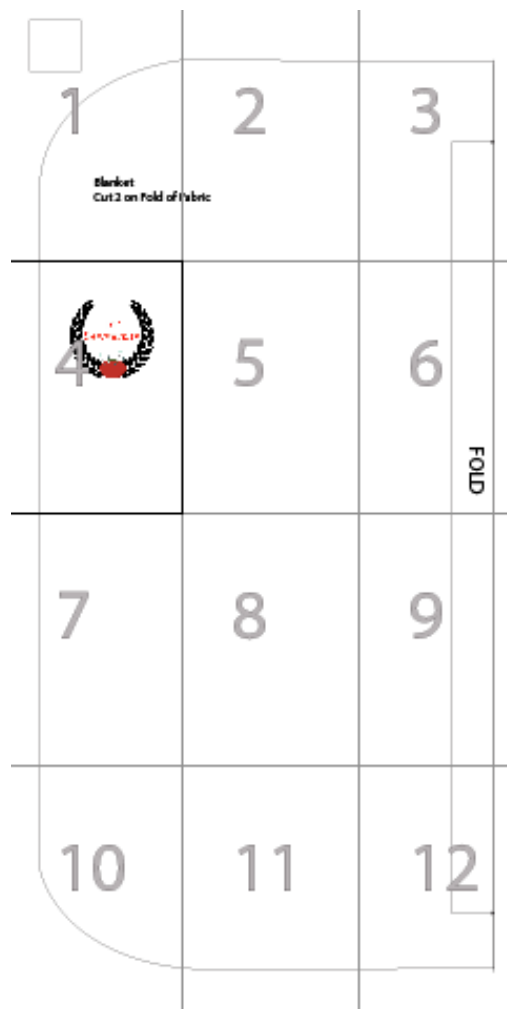
You may make and sell items made from this pattern. You may not, however, redistribute this pattern either electronically or in printed form.

45" WIDE FABRIC REQUIREMENTS -YARDS:

1 1/4 yards each for the front and the back. If you want to use the same fabric on both sides, purchase 2 1/2 yards.

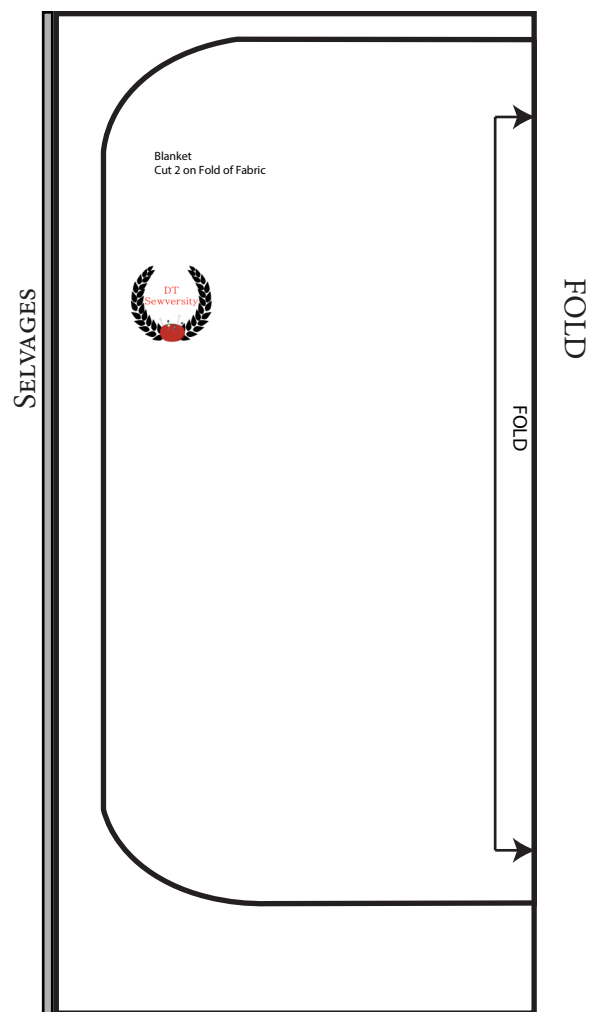
PRINTING INSTRUCTIONS

Be sure to set your printer to not scale the pattern pieces by selecting either "Actual Size" or "Custom Scale: 100%" in your print dialog.



Pattern Assembly. Print the pages and align the dashed page borders so that they touch. Tape the pages in place.

FABRIC LAYOUT: 45" wide fabric folded in half lengthwise



There is one pattern piece. Cut two on the fold of the fabric.

READ THE INSTRUCTIONS BEFORE BEGINNING TO SEW.

All seam allowances are included and are 1/2" unless specifically stated otherwise.

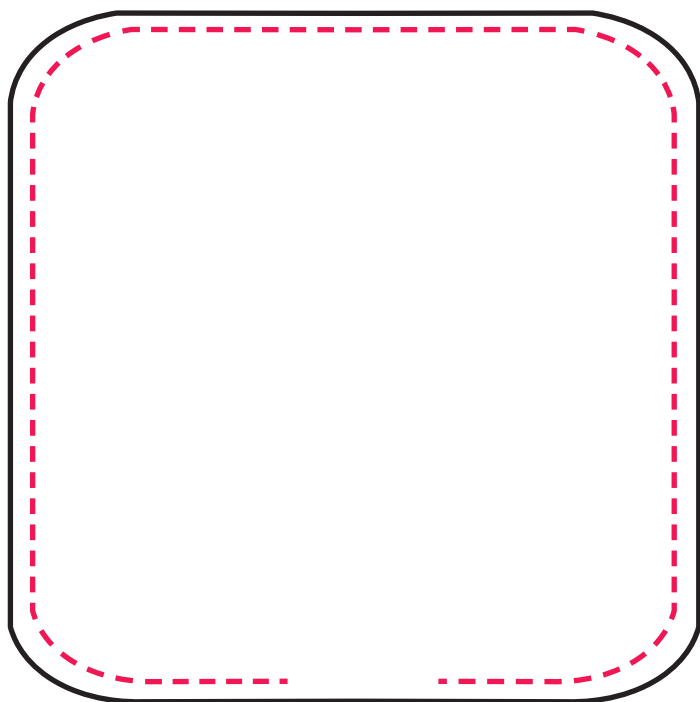


Right Side

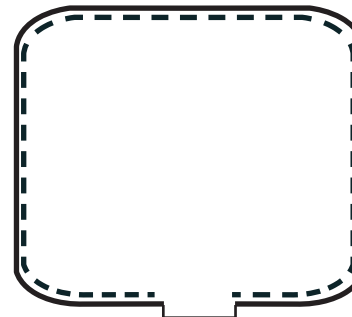


Wrong Side

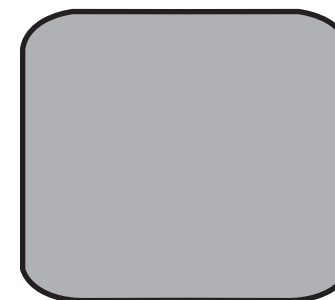
1. Right sides together, sew the front to the back, leaving an opening between the markings.



2. Notch the corners and trim the seams. Do not trim the opening. Turn the blanket right side out. Press.

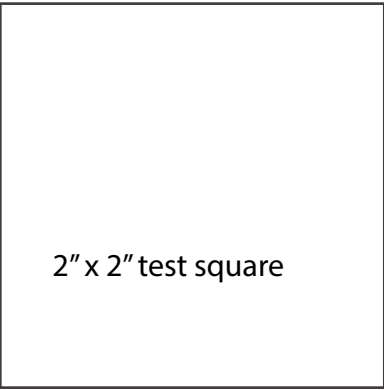


You will have a little tab at the bottom after trimming your seams.

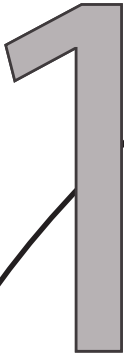


3. Tuck the edges of the opening toward the wrong side and press. Top stitch all the way around using a 1/4" seam allowance. You may choose to use a straight, zig zag, or decorative stitch.





2" x 2" test square

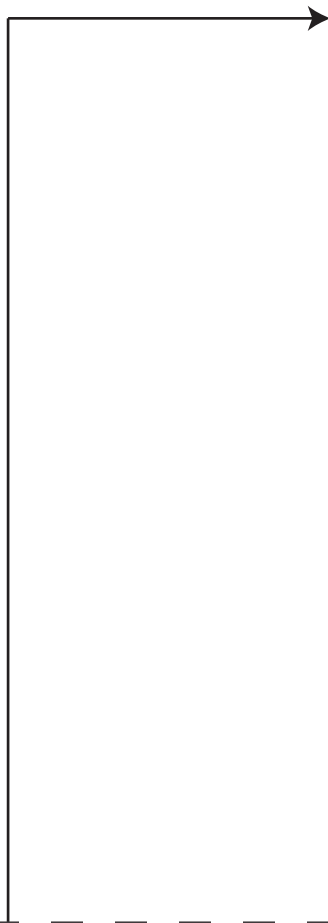


Blanket
Cut 2 on Fold of F

2

Fabric

3



4

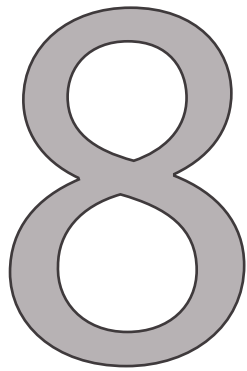


5

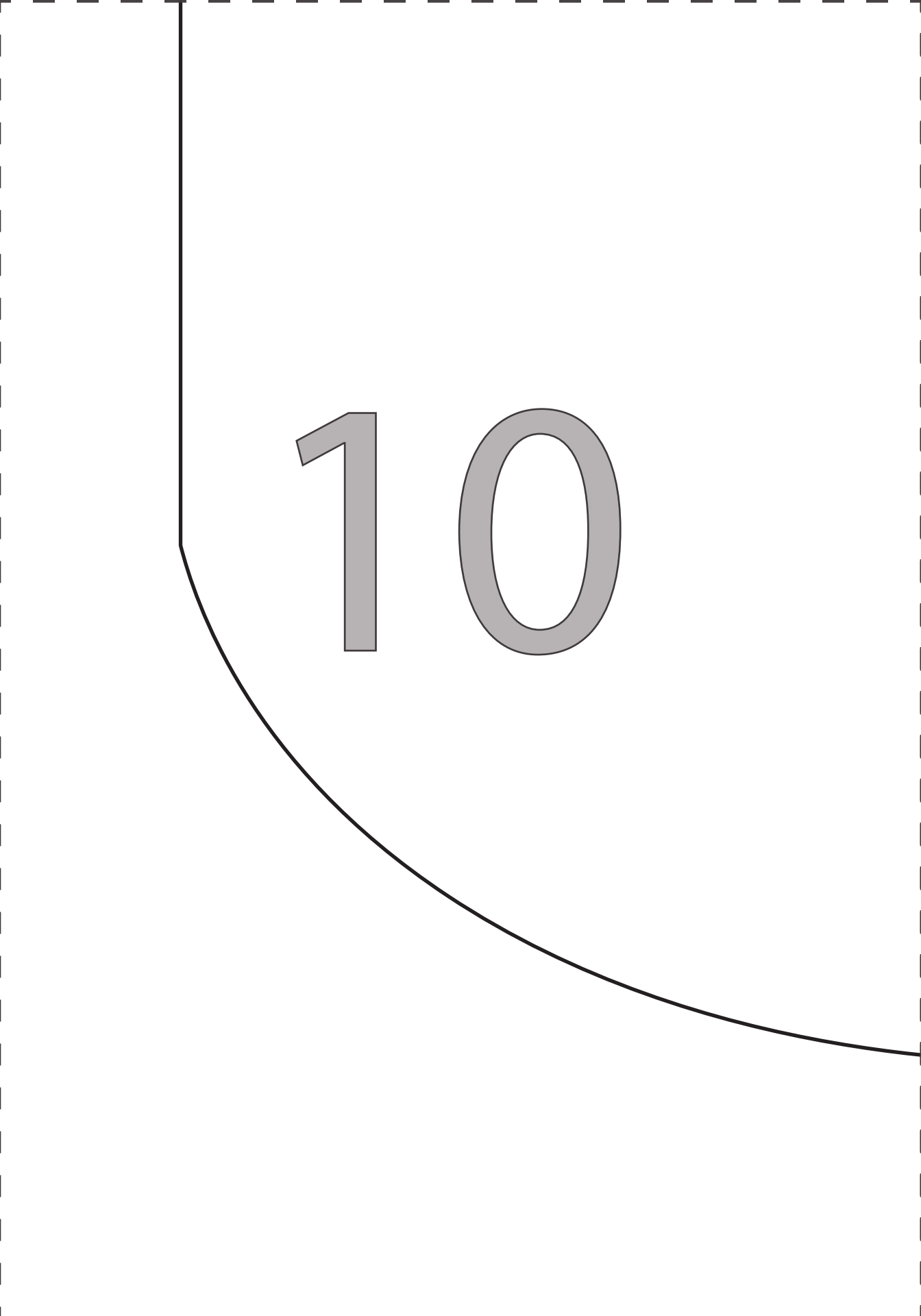
6

FOLD

7



9

A large, light gray number '10' is centered in the upper half of the page. Below the number is a solid black line that starts vertically on the left, curves smoothly to the right, and then continues horizontally to the right edge of the page. A dashed black line runs vertically along the right edge of the page.

10

1 1

1 2

