

MRS. DART FIRE

HALF APRON



LEARNING TO SEW PROJECT 12

DESCRIPTION- Mrs Dart Fire is a one size fits most half apron with an optional patch pocket. The finished length is 23.5”.

RECOMMENDED FABRICS: WOVENS

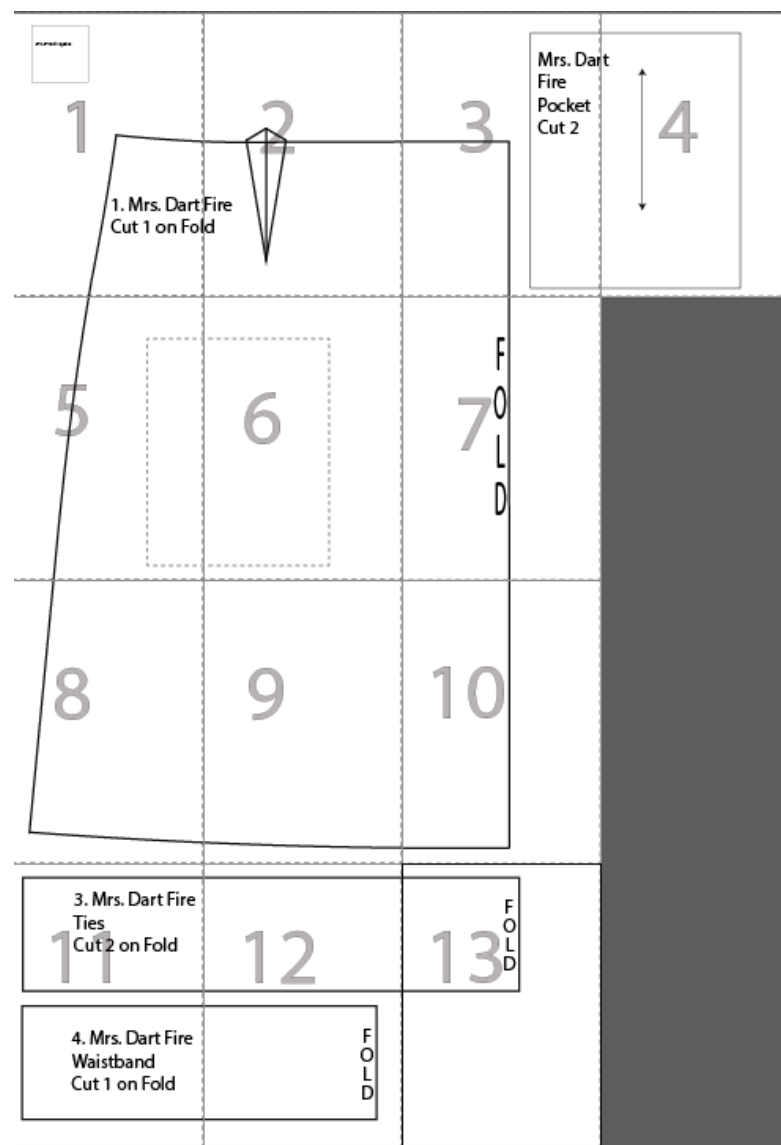
Cotton, Broadcloth, Twill, Poplin, Denim

45”WIDE FABRIC REQUIREMENTS -YARDS: 2 yards

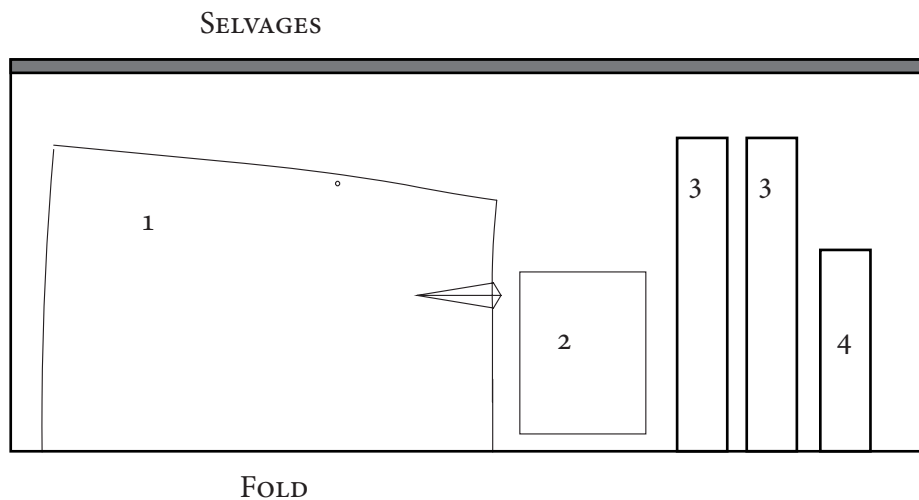
TERMS OF USE: you may use this pattern to make garments to sell in quantities less than 100 per year. This pattern is not to be shared, sold, duplicated or transferred to another in any way.

PRINTING INSTRUCTIONS

Be sure to set your printer to not scale the pattern pieces by selecting either "Actual Size" or "Custom Scale: 100%" in your print dialog.



FABRIC LAYOUT: 45" width, folded in half lengthwise. Extra fabric will be required for prints, directional fabric or fabric with a nap.



1. APRON FRONT, CUT 1 ON FOLD
2. OPTIONAL POCKET, CUT 2
3. TIES, CUT 2 ON FOLD
4. WAISTBAND, CUT 1 ON FOLD

TRANSFER ALL MARKINGS. READ THE INSTRUCTIONS
BEFORE BEGINNING TO SEW.

All seam allowances are included and are 1/2" unless specifically stated otherwise.

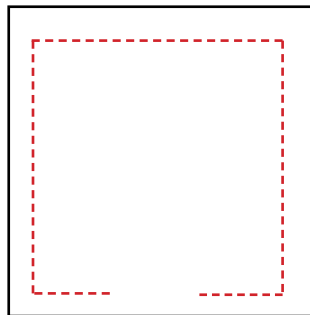


Right Side

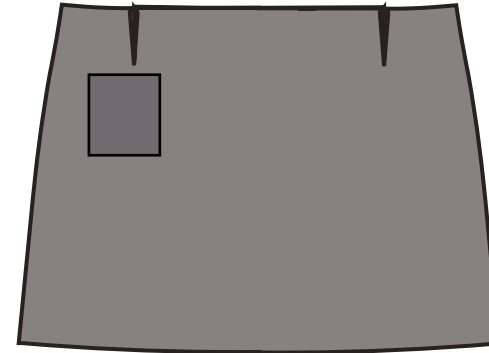


Wrong Side

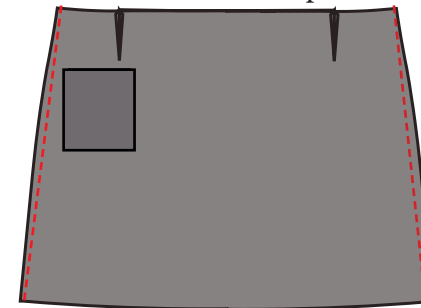
1. Sew the darts in the apron front.
2. Stitch the optional pocket pieces right sides together, and leaving an opening for turning as marked. Clip the corners, trim the seams and turn right side out. Press. Topstitch along all sides of the pocket using a 1/4" seam allowance.



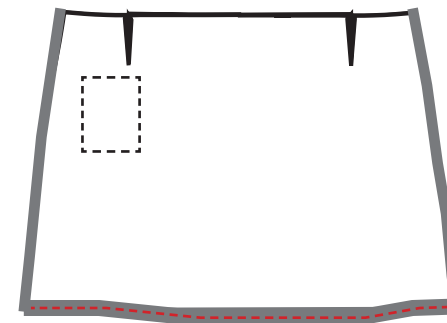
3. If using the optional pocket, sew it to the right side of the apron as marked using the topstitching as a guide to sew the pocket to the apron.



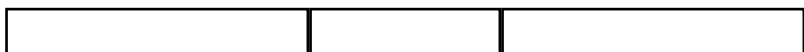
4. Sew the sides of the apron in a 1/2" narrow hem. To make the narrow hem, press the edges 1/4" toward the wrong side. Turn another 1/4" toward the wrong side, press. Stitch the hems in place.



5. Turn the hem of the apron 1/2" toward the wrong side and press. Turn another 1/2" toward the wrong side and press again. Stitch the hem in place.



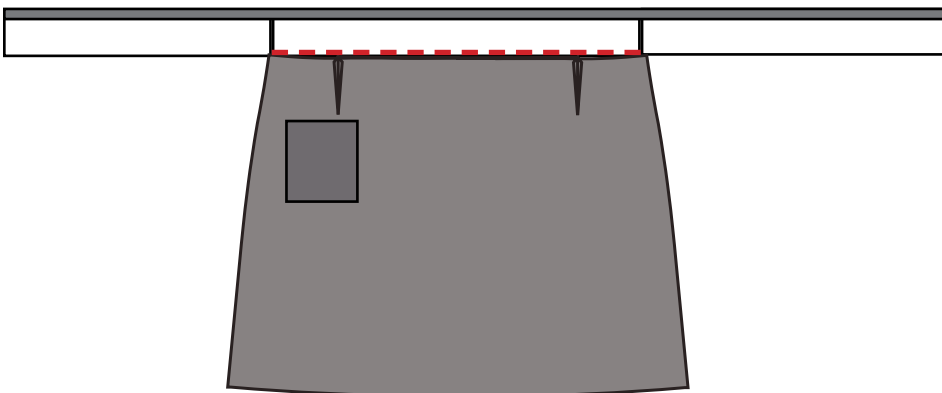
6. Right sides together, attach the ties to the waistband. Press the seams and finish the edges.



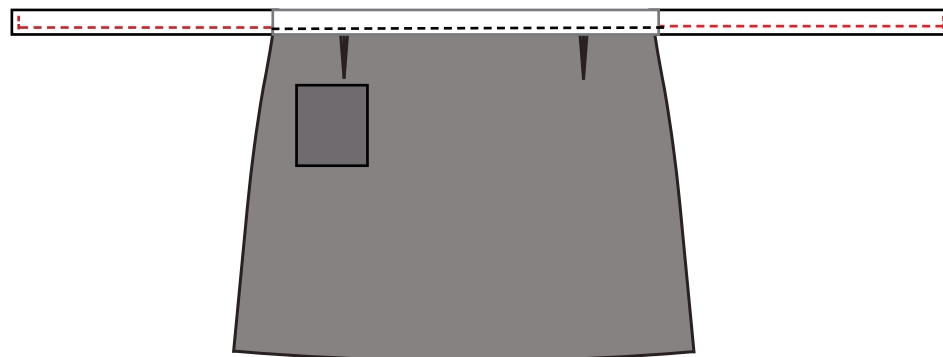
7. Fold one edge of the waistband under 1/2" toward the wrong side and press.



6. Pin the unfolded edge of the waistband to the apron. The right side of the waistband is facing the wrong side of the apron. Match the center of the waistband to the center of the apron. Sew just the waistband to the apron.

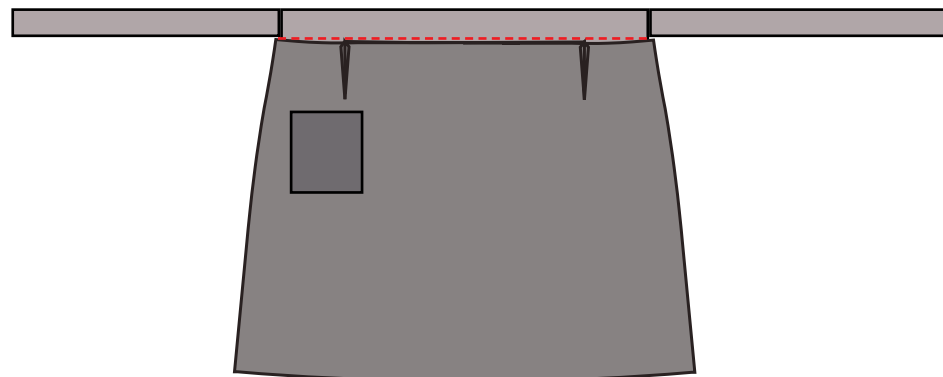


7. Unfold the pressed edge of the waistband. Fold the waistband in half width wise, toward the wrong side. Align the cut edges of the ties. Right sides facing, sew the open edges of the tie together. Trim the seams, and clip the corners.

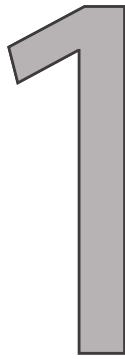


8. Turn the ties and the waistband right side out.

9. Bring the pressed edge of the waistband over toward the right side. Place the pressed edge over the seam and sew in place. Sew as close to the pressed edge as possible. Topstitch along the ties and waistband if desired.



2" x 2" Test Square



1. Mrs. Dart
Cut 1 on Fo

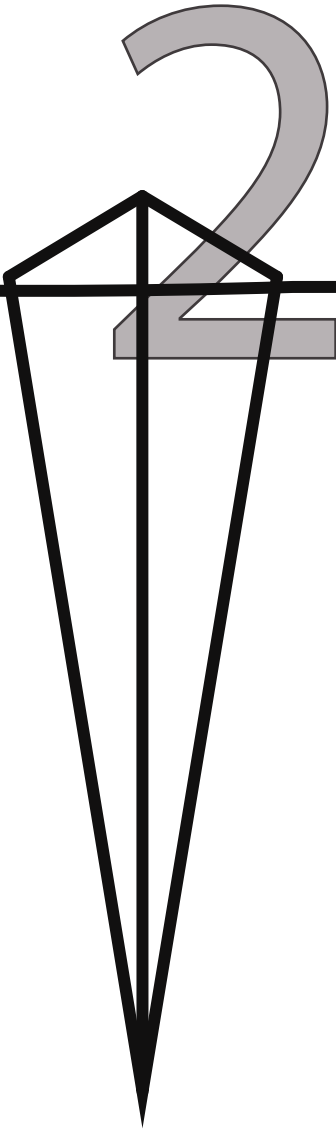
rt



4



Fire
d



3

Mrs. Dan
Fire
Pocket
Cut 2

5

Option
Pocket

nal t Placement

6



70 F
L
D

8

Lenthen/Shorten

9

10

3. Mrs. Dart Fire Ties

1 Cut 2 on Fold

4. Mrs. Dart Fire Waistband

Cut 1 on Fold

12



F
O
L
D

13

FOLD